

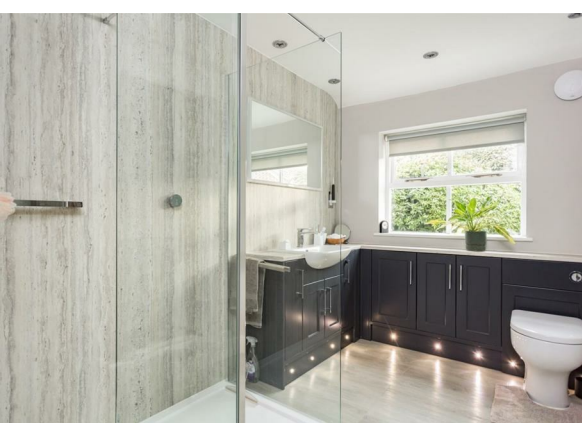


Carlton Husthwaite Guide Price £995,000

Discreetly positioned on the rural fringes of a fabulous village only 16 miles north of York and 6 miles south of Thirsk, this beautiful 5 bedroom barn conversion, with origins dating back to the mid 1700's, stands set within 1.65 acres in total and includes 2,838 sq ft of characterful living space, extensive parking, double garaging, 2 stables and a 1.33 acre paddock.

*** FLEXIBLE GROUND FLOOR LIVING & SLEEPING SPACE ***

Follow Stephensons on your favourite social media platforms for exclusive video content, pre-market teasers, off market opportunities and a head start on other house hunters by getting to see many of our new listings before they appear online. Find us by searching for [stephensons1871](https://www.stephensons1871.com).



Inside

A useful entrance porch opens into a magnificent reception hall with exposed beams, oak flooring, elegant staircase and a stripped pine period door leading through into a spacious sitting room with further exposed beams, impressive full width red brick fireplace, wood burning stove and double doors opening out into the secluded rear garden.

An inner hallway with stripped pine period door leads off into a generous ground floor double bedroom (or 4th reception room) with an adjoining stylish shower room, formal dining room and a charming snug with exposed beams, open fireplace and further access out into the rear garden.

The wonderful dining kitchen boasts a 12'2" (3.71m) high vaulted ceiling with 4 skylights and was upgraded along with the utility room in 2024 to feature an extensive range of contemporary base and wall storage cupboards, complemented by quartz worktops, a quartz topped central island with dining bar, range cooker space and a integrated appliances to include a dishwasher, fridge and freezer.

The rear lobby off the kitchen features a stable style door opening out into a south facing courtyard and doors leading off into the utility room and a separate cloakroom/wc.

The first floor landing leads off into 4 good sized bedrooms (2 with high vaulted ceilings and 1 with views towards the White Horse) and a family bathroom with both a bath and separate walk-in shower.

Other internal features of note include double glazing and a mix of both electric radiators and an LPG fired central heating system.

Outside

Located on the rural fringes of the village, a shared driveway with Woodstock Lodge leads up to The Granary's own gated driveway and an expansive gravel parking area which also provides access into a versatile 826 sq ft outbuilding which is currently configured as a double garage, 2 stables and a hay store with rear access onto a bridle path.

The front garden is mainly laid to lawn and both the side and rear gardens enjoy a high degree of privacy and are predominantly paved with shrub borders.

The 1.33 acre paddock benefits from a water supply and is located directly opposite the entrance to The Granary's private driveway.

In total, and including the paddock, this property comes with 1.65 acres in total.

Tenure

Freehold

Services/Utilities

Electricity, water and sewerage are understood to be connected.

Broadband Coverage

Up to 1600* Mbps download speed

*Download speeds vary by broadband providers so please check with them before purchasing.

EPC Rating

*

Council Tax

G - North Yorkshire Council

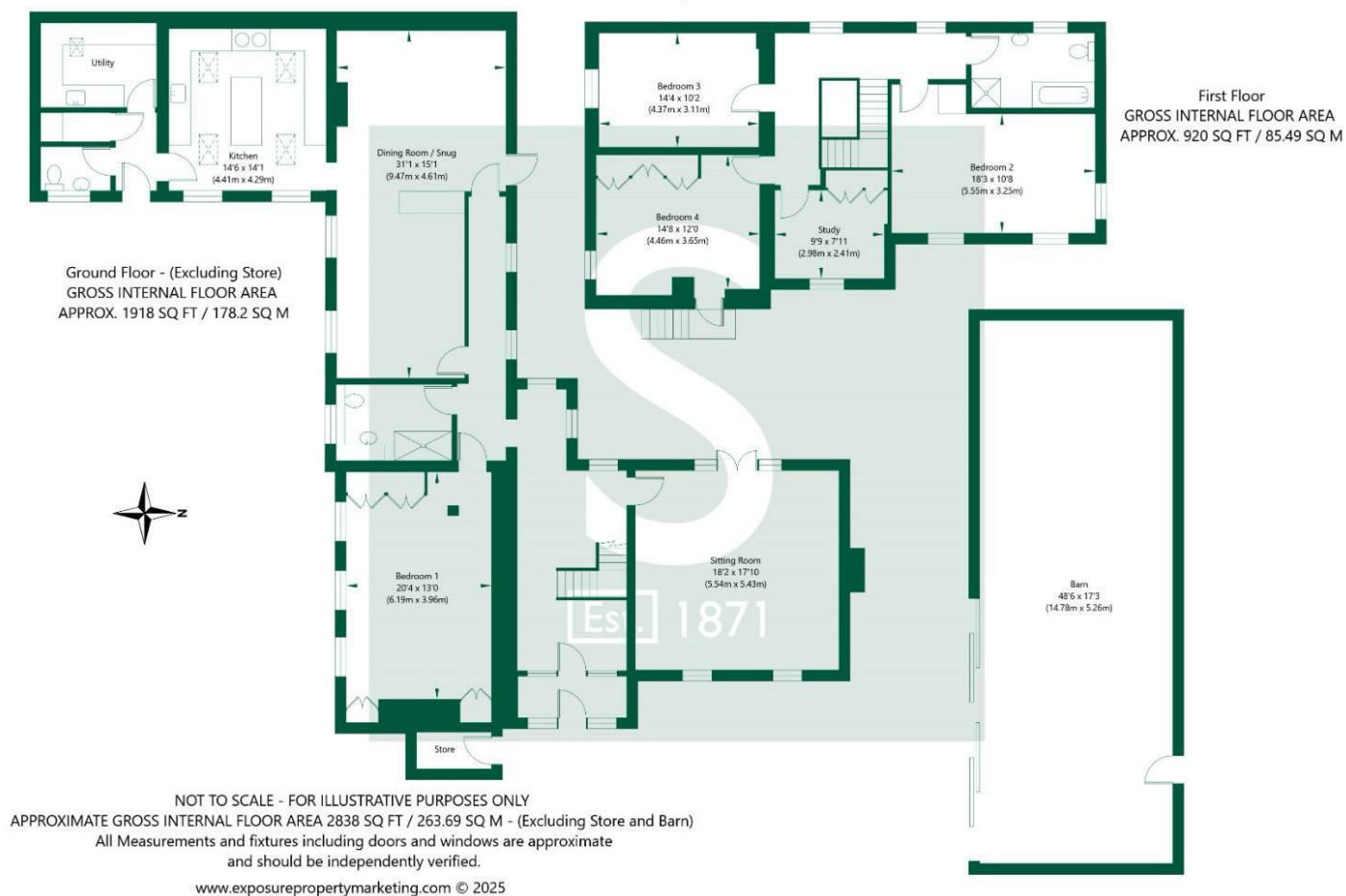
Current Planning Permissions

No current valid planning permissions

Viewings

Strictly via the selling agent - Stephenson's Estate Agents, Easingwold

Carlton Husthwaite, Thirsk YO7 2BW



Stephensons

York	01904 625533
Knaresborough	01423 867700
Selby	01757 706707
Boroughbridge	01423 324324
Easingwold	01347 821145
York Auction Centre	01904 489731
Haxby	01904 809900

Partners

J F Stephenson MA (cantab) FRICS FAAV
 I E Reynolds BSc (Est Man) FRICS
 R E F Stephenson BSc (Est Man) MRICS FAAV
 N J C Kay BA (Hons) pg dip MRICS
 O J Newby MNAEA
 J E Reynolds BA (Hons) MRICS
 R L Cordingley BSc FRICS FAAV
 J C Drewniak BA (Hons)

Associates

N Lawrence

